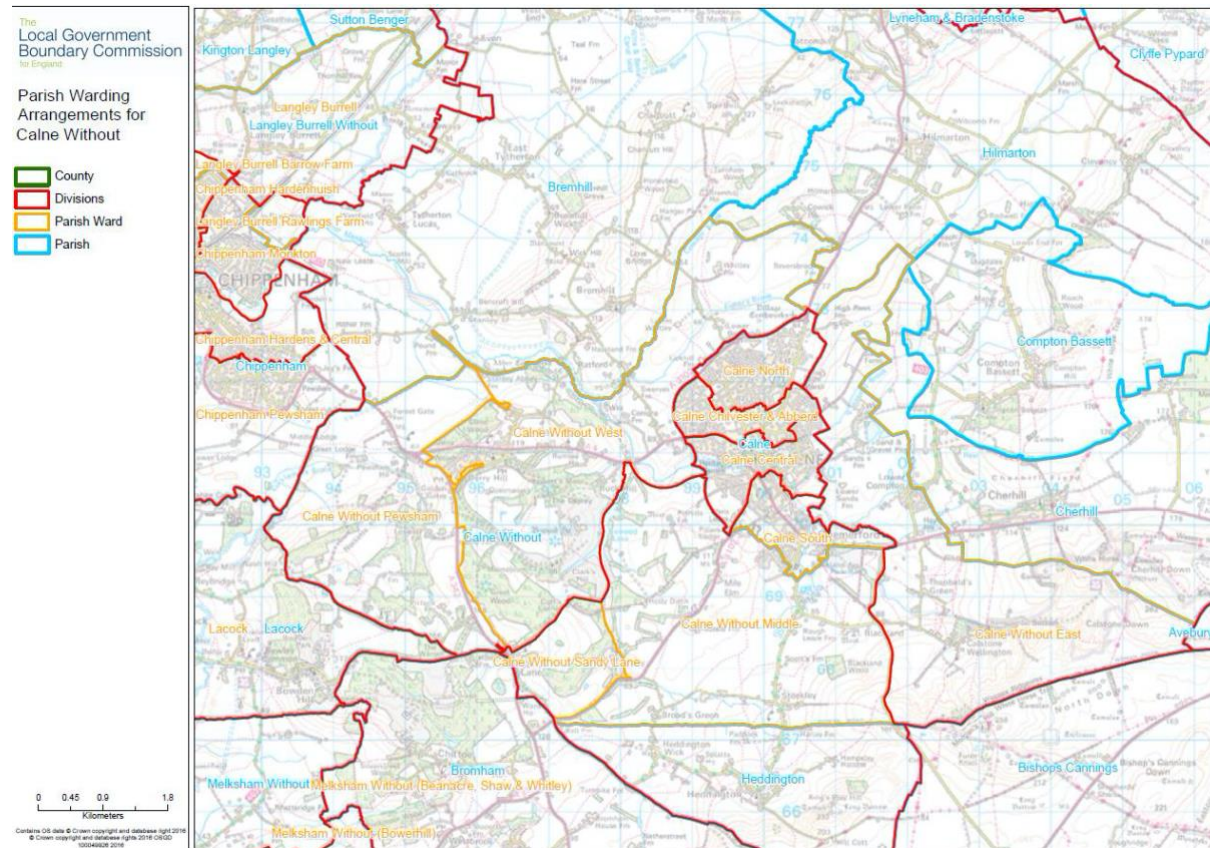


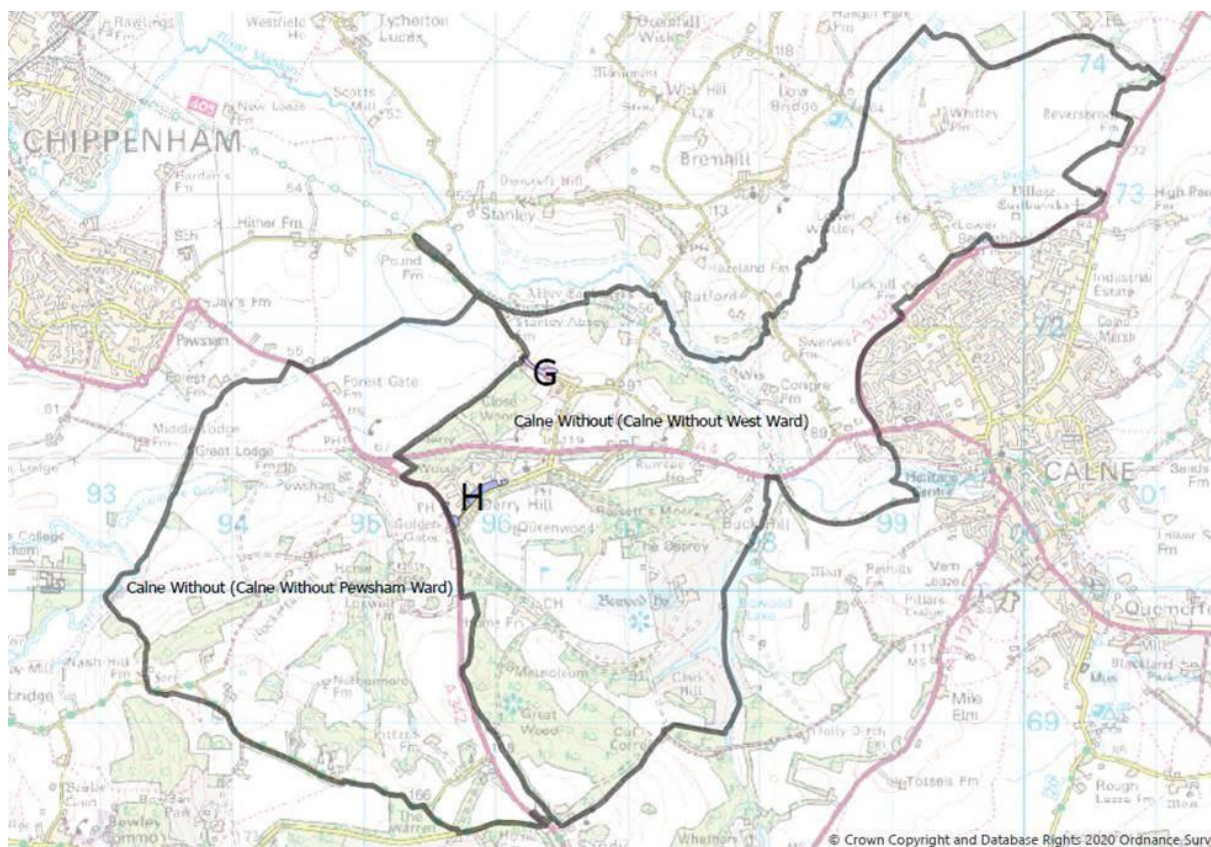
Ward Boundary Changes for Calne Without Parish

The Local Government Boundaries Commission England has made changes to the Ward boundaries and numbers of Councillors for Calne Without Parish, the changes come into force for the May Local Elections in 2021.

The details of the changes are shown on the following 2 maps:



This map shows in yellow the Parish Wards as set by the LGBCE.



This map shows the two smaller changes requested by the Parish Council and approved by Wiltshire Council as part of the Community Governance Review which have also now received consent from the LGBCE.

The new Wards will also have a slightly different number of Councillors representing them although overall the Council remains the same at 15 Councillors

Final recommendations

Calne Without Parish Council should comprise 15 councillors, as at present, representing five wards:

Parish ward	Number of parish councillors
Calne Without East	3
Calne Without Middle	4
Calne Without Pewsham	1
Calne Without Sandy Lane	1
Calne Without West	6

The Parish Council will be posting more information about the elections on local noticeboards and the website.

November 2020